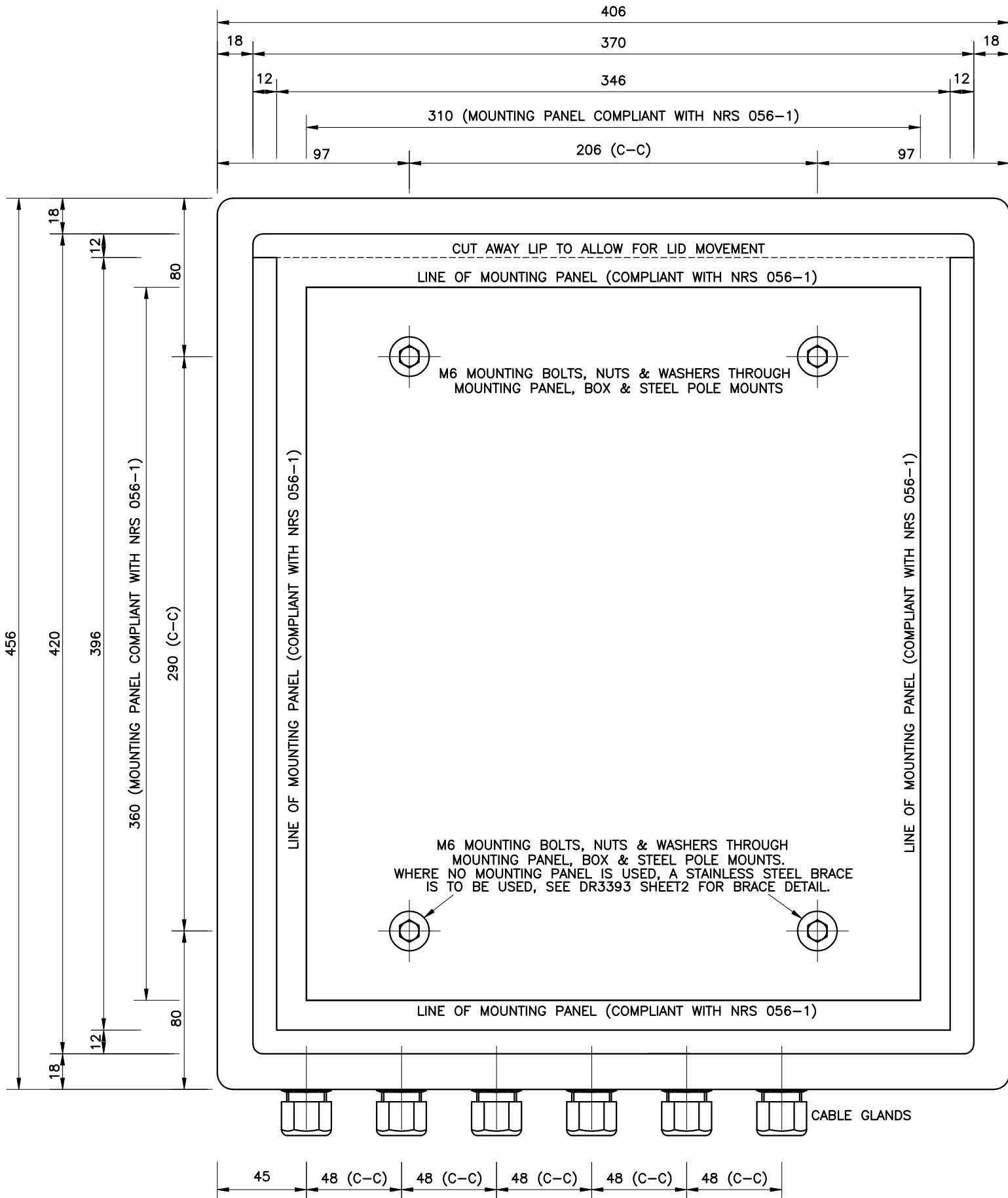
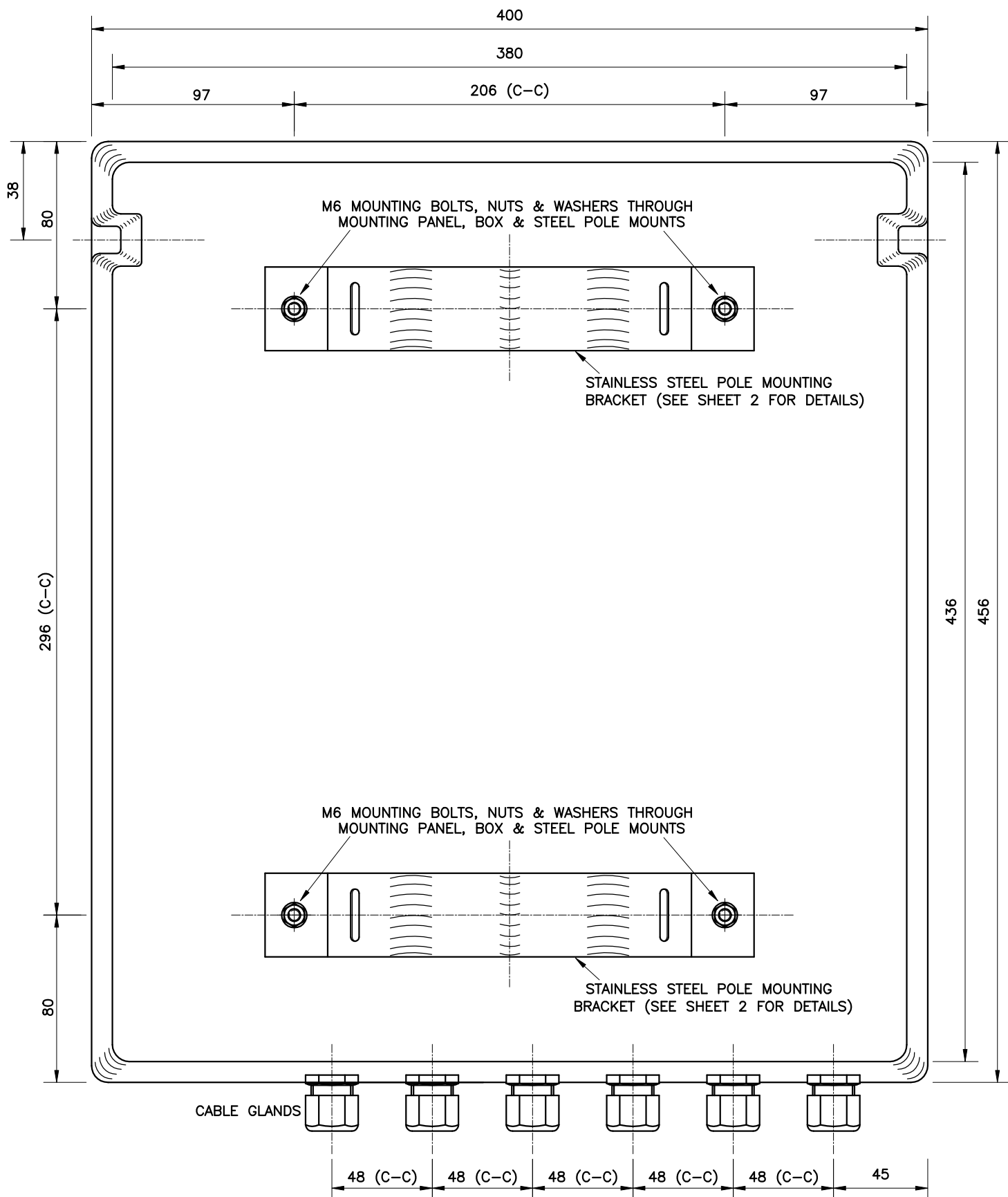


NOTES

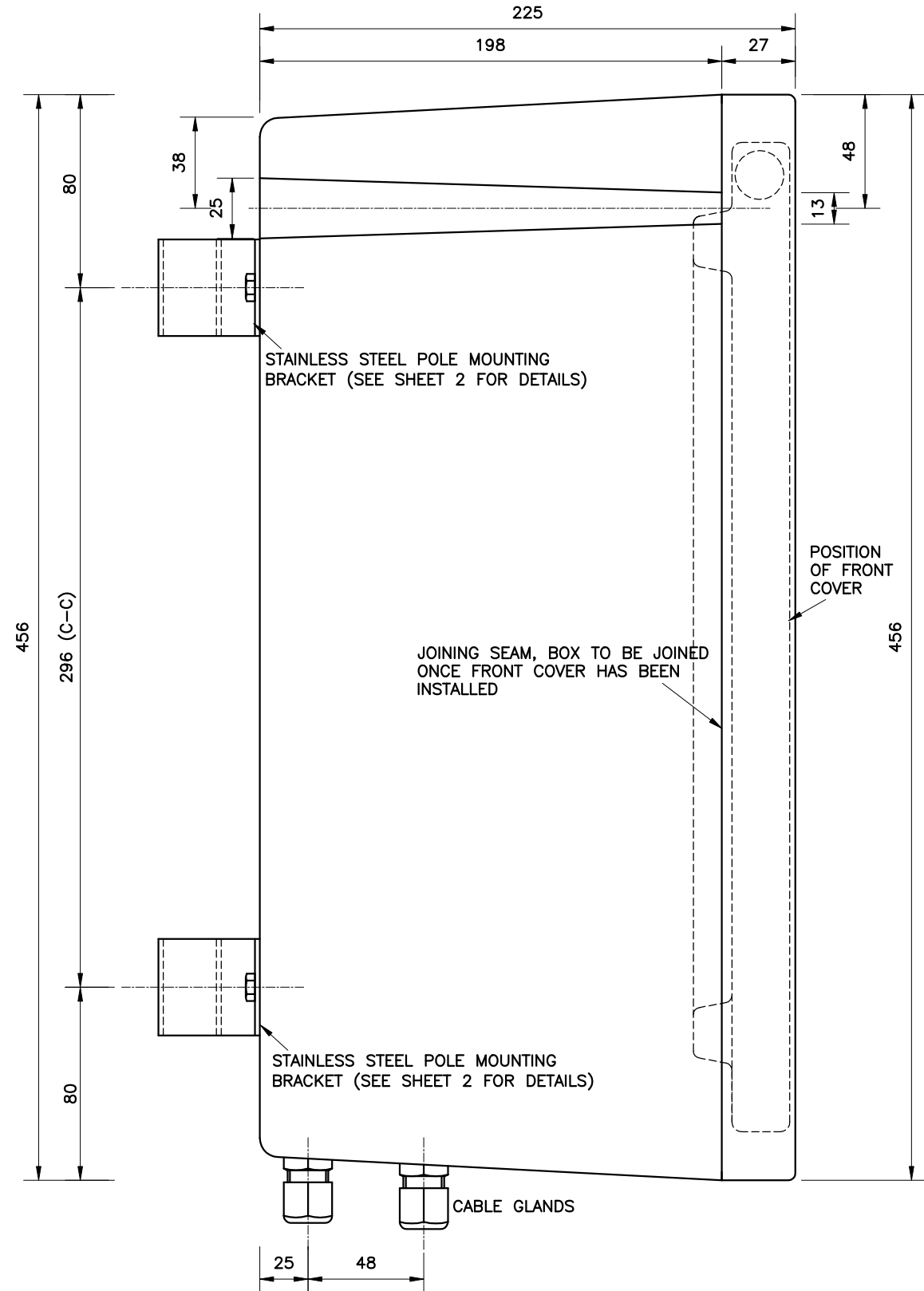
SEE SHEET 2 FOR FRONT COVER, BOARD LAYOUT, BRACKETS & HARDWARE
SEE SHEET 3 SCHEMATIC BOARD LAYOUT.



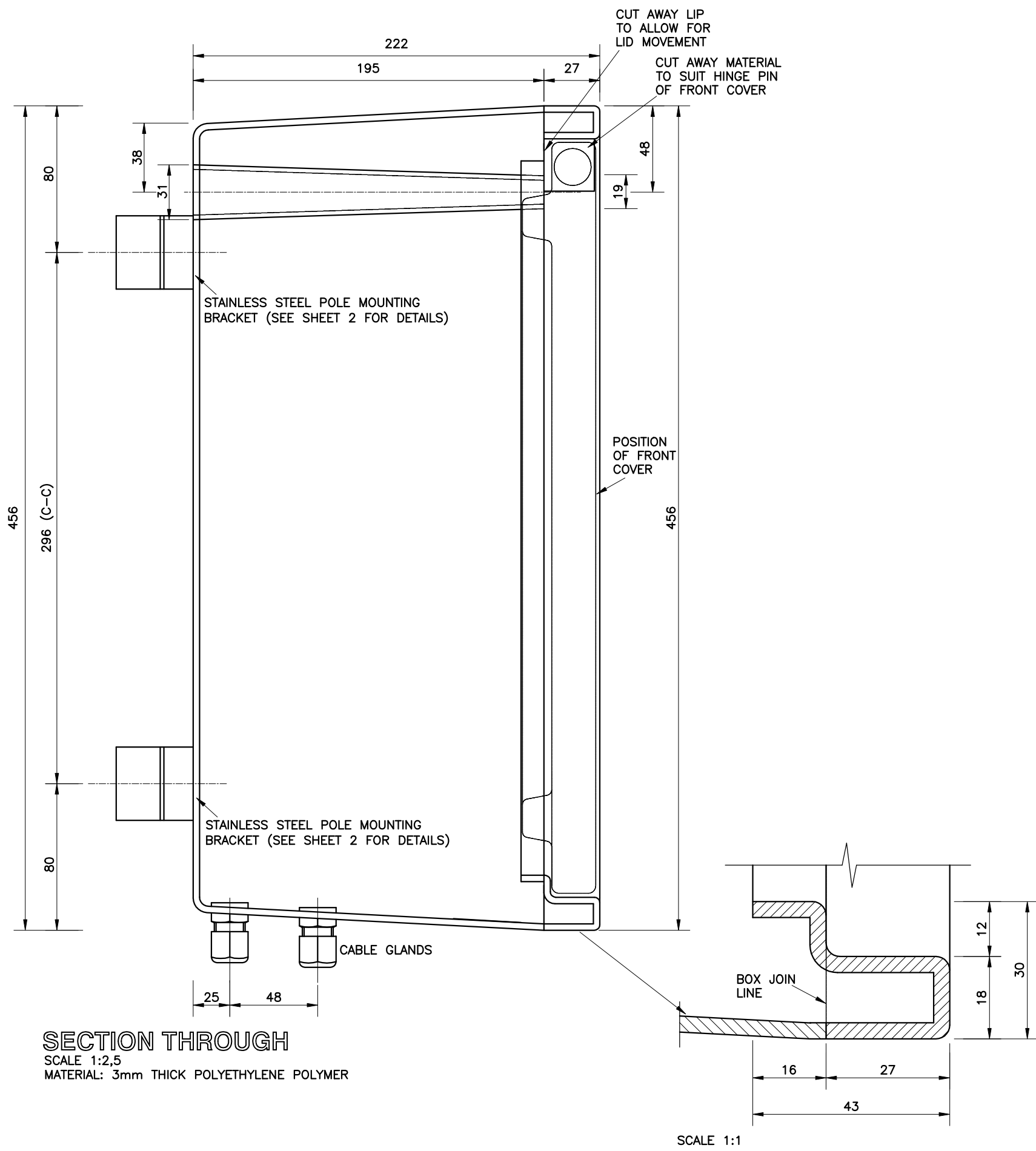
BOX FRONT VIEW (FRONT COVER REMOVED)
SCALE 1:2,5
MATERIAL: 3mm THICK POLYETHYLENE POLYMER



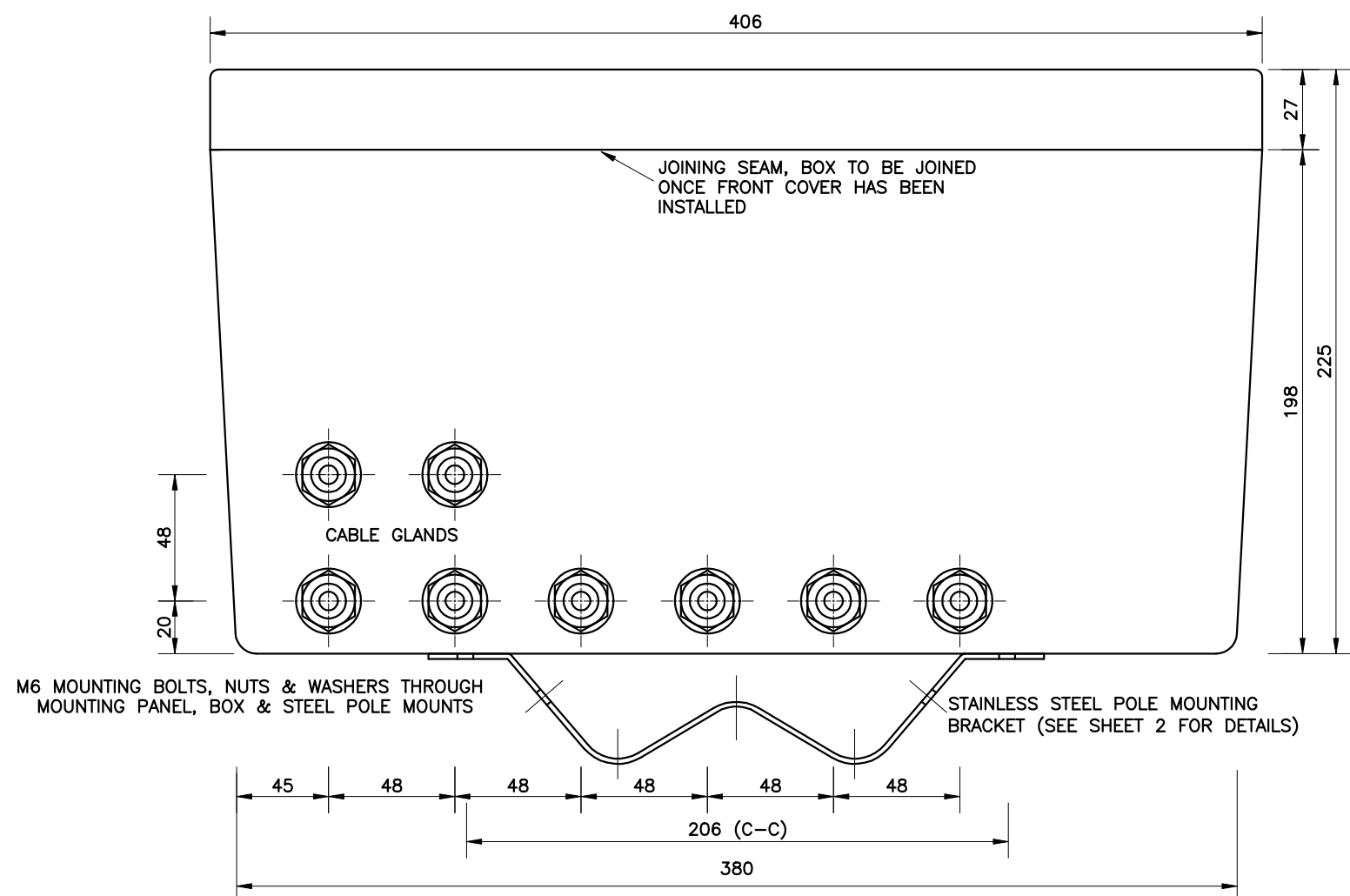
BOX REAR VIEW (FRONT COVER REMOVED)
SCALE 1:2,5
MATERIAL: 3mm THICK POLYETHYLENE POLYMER



BOX SIDE VIEW (FRONT COVER REMOVED)
SCALE 1:2,5
MATERIAL: 3mm THICK POLYETHYLENE POLYMER



SECTION THROUGH
SCALE 1:2,5
MATERIAL: 3mm THICK POLYETHYLENE POLYMER



BOX UNDERSIDE VIEW (FRONT COVER REMOVED)
SCALE 1:2,5
MATERIAL: 3mm THICK POLYETHYLENE POLYMER

MINIMUM INTERNAL DIMENSIONS:-
WIDTH 400mm
HEIGHT 450mm
DEPTH 195mm
MATERIAL THICKNESS 3mm

REVISION 1:- A.HALL - 2026/04/16
MOUNTING PANEL (COMPLIANT WITH NRS 056-1)

MANUFACTURING DRAWING

THE COPYRIGHT OF THIS PLAN AND DESIGN RESIDES WITH THE CITY OF CAPE TOWN AND MAY NOT BE REPRODUCE ISSUED OR USED FOR ANY PURPOSE OTHER THAN IT WAS INTENDED FOR ORIGINALLY



CITY OF CAPE TOWN
ISIXEKO SASEKAPA
STAD KAAPSTAD

ENERGY DIRECTORATE

SPACIAL DATA SERVICES
ARCHITECTURAL/MECHANICAL SECTION
HEAD OFFICE BLOEMHOF ROAD
BELLVILLE, PRIVATE BAG X44 7535

DIRECTOR: ELECTRICITY GENERATION & DISTRIBUTION	E. CAPE
MANAGER: ENGINEERING	J. VAN DER MERWE
CO-ORDINATOR SDS	G. HECTOR

PROJECT TITLE
**30A POLE MOUNTED
POLYETHYLENE STREET LIGHT
CONTROL BOX
GENERAL ARRANGEMENT**

APPROVED BY:	CHECKED	
COMPILED: A. HALL		
SCALE: AS SHOWN	DATE: 2023/08/18	
DRAWING No. DR 3393	SHEET 1	REVISION No. 1
		SHEET SIZE A1